

# BONDED FENIX NTM® WORKTOP

## INSTALLATION AND MAINTENANCE GUIDE

Technical data sheets and other relevant guidelines for FENIX® are available to download from the FENIX® website [www.fenixforinteriors.com](http://www.fenixforinteriors.com)

### INTRODUCTION

Bonded FENIX NTM® worktops aren't like any other on the market. Created to stand the test of time, these durable surfaces make the perfect choice for a kitchen worktop as they require no treatment prior to fitting and no specialist equipment for installation. This guide is designed to provide you with all the information you require to install and care for your new Bonded FENIX NTM® worktop, and to help you keep the surface in pristine condition. Please take the time to thoroughly read this guide before commencing installation as failure to follow it will result in invalidating your warranty.

#### IMPORTANT

BONDED FENIX NTM® WORKTOPS ARE SUPPLIED IN SHRINK-WRAPPED PACKAGING. DO NOT DISCARD ANY OF THE PACKAGING SUPPLIED UNTIL YOU HAVE FULLY INSPECTED YOUR WORKTOP PRIOR TO INSTALLATION FOR DAMAGES OR DEFECTS AND TO ENSURE YOU HAVE RECEIVED THE RIGHT DECOR AND SPECIFICATION. AN INSTALLED WORKTOP WILL BE SEEN AS HAVING BEEN INSPECTED AND NO LIABILITY WILL BE ACCEPTED FOR ITS REMOVAL AND/OR REPLACEMENT.

PLEASE RETAIN THESE INSTRUCTIONS FOR FUTURE REFERENCE.

WHENEVER CUTTING, ALWAYS DOUBLE CHECK MEASUREMENTS BEFORE PROCEEDING.

To ensure the advertised size of the worktop is a completely usable section, Bonded FENIX NTM® worktops may be supplied oversized in length by up to 50mm. Therefore, we recommend measuring the length of the surfaces prior to installation and cutting where required.

#### IMPORTANT

ALWAYS THOROUGHLY INSPECT THE WORK SURFACE FOR ANY TRANSIT DAMAGES AND MARKS PRIOR TO FITTING.

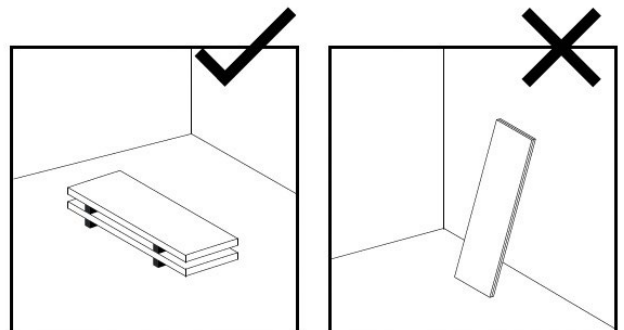
WHEN CUTTING, ALWAYS DOUBLE CHECK MEASUREMENTS BEFORE PROCEEDING.

### STORAGE

After delivery, we recommend waiting for approximately 24 hours to allow your Bonded FENIX NTM® worktop to acclimatise. Rooms should be dry, clean and frost-free. Installation should then be carried out as soon as possible after this time. If a longer period of storage is necessary, Bonded FENIX NTM® worktops must be laid flat and fully supported in their original packaging.

Surfaces must never be placed directly onto the floor, instead separate the floor and worktops with battens or pallets and sheets on a flat surface to provide full support. As shown in the diagram, battens must also be used to separate multiple worktops stored together, also shown in the diagram.

Make sure the storage area is indoors, has a stable humidity and will not be subject to extreme temperatures.



**DO NOT UNPACK WORKTOPS UNLESS...**

- THE ROOM HUMIDITY IS STABLE AND SHOULD BE DRY, CLEAN AND FROST-FREE.
- ALL CARCASES AND CABINETS ARE BUILT AND FULLY FITTED/COMPLETE.
- ALL BUILDING DUST AND DEBRIS HAS BEEN CLEANED AND CLEARED OFF SITE.
- ALL WET TRADES ARE FINISHED AND A SUFFICIENT PERIOD OF TIME ALLOWED FOR NATURAL DRYING.
- FRESH PLASTERWORK HAS BEEN ALLOWED TO DRY FOR A MINIMUM OF 6 WEEKS OR UNTIL THE PLASTER IS DRY THROUGHOUT.

**FIXING**

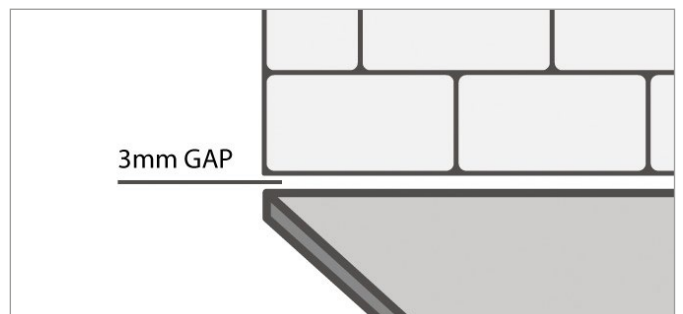
When fixing Bonded FENIX NTM® worktops to cabinets, position the fixings at even intervals- three screws at the back and front of each cabinet unit are recommended. Use a 4mm gauge drill bit to make clearance holes through the support panels on each cabinet. Place your Bonded FENIX NTM® worktop on top of the cabinets ensuring there is at least 3mm expansion gap between worktop and the wall. Screw a 5mm x 35mm wood screw through each fixing position.

**FIXING TO MASONRY FEATURES**

Do not fix Bonded FENIX NTM® worktops directly onto masonry. Use timber spacers measuring 6-10mm thick, with a Damp Proof Membrane (DPM) beneath. This prevents the transmissions of moisture and provides airspace under the top, so that the worktop is not compromised.

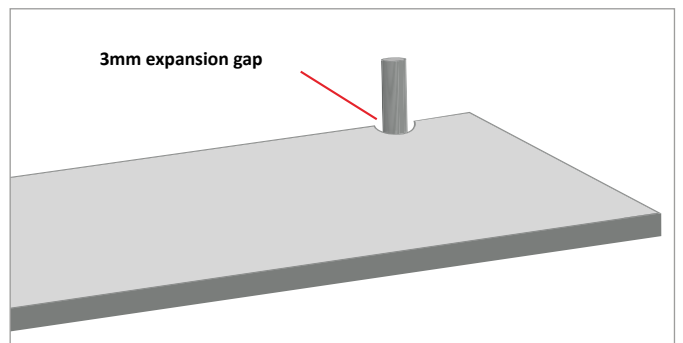
**TILES**

If you are fitting tiles above your Bonded FENIX NTM® worktop, please ensure you leave a space of at least 3mm between the worktop and the bottom row of tiles. This will allow for easy removal of the worktop if necessary.



**PIPE HOLES**

If holes have been cut through the Bonded FENIX NTM® worktop to accommodate pipes, a 2-3mm allowance for expansion/contraction should be allowed around the pipe. This gap can be easily filled with a silicone sealant.



**DISHWASHERS AND WASHING MACHINES**

When installing a dishwasher or washing machine, ensure a protective moisture barrier is fitted correctly to the underside of your worktop. These are sometimes supplied by the appliance manufacturer, or alternatively can be purchased from Worktop Express.

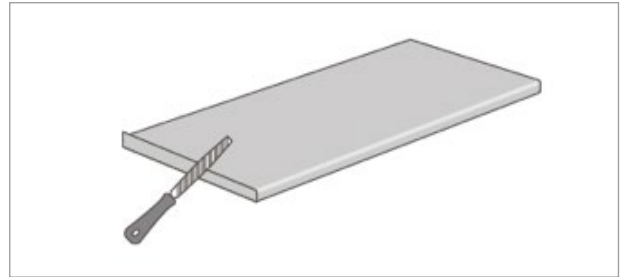
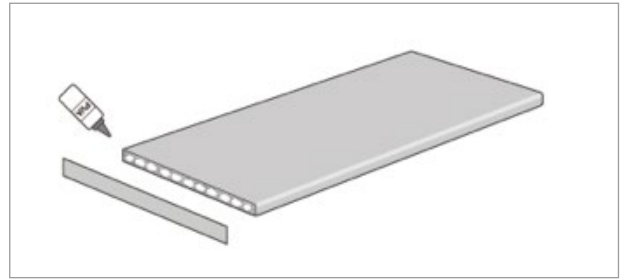


## EDGING STRIPS

Before applying your edging strip, always ensure your worktop edge is completely flat and free from dust. Edging strips can be applied using good-quality waterproof adhesive directly to the show ends.

To protect the surface from any overspill of adhesive, we strongly recommend covering the relevant decorative areas of the worktop surface with masking tape. Apply the adhesive to both the cut work surface and edging strip, allow it to go tacky, then apply the strip to the show ends.

Trim any excess from the edging strips with a laminate trimmer or sharp carpenters' plane and use a fine-toothed file to smooth the edge until flush with the worktop.



## CUTTING BONDED FENIX NTM® WORKTOPS

### IMPORTANT

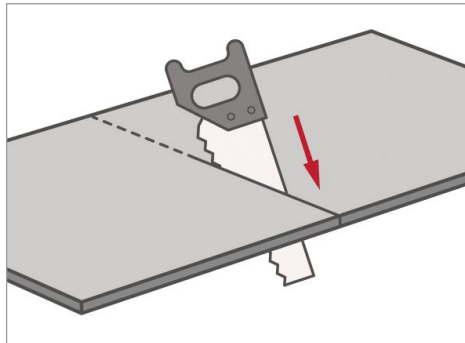
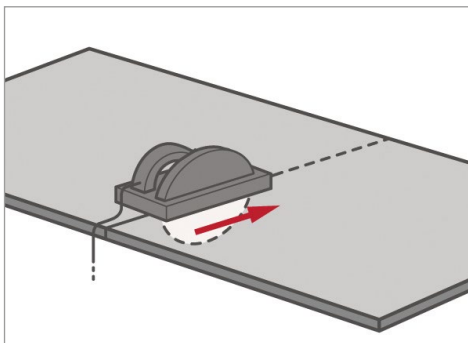
BEFORE CUTTING WORKTOPS, DOUBLE-CHECK YOUR MEASUREMENTS AND ENSURE THESE ARE MARKED CORRECTLY WITH A PENCIL.

WHEN CUTTING BONDED FENIX NTM® WORKTOPS, YOU SHOULD ALWAYS CUT INTO THE EDGE, NEVER AWAY FROM IT.

### CUTTING TO SIZE

All cutting tools should be sharp, and safety goggles and a dust mask should be used whenever cutting Bonded FENIX NTM® worktops.

The best results will be achieved by cutting the worktop oversized by 5mm, using a portable circular saw (with the decorative side face down) or with a hand saw (decorative side face up).



Finish the edge using a portable hand router, straight edge and 'G' clamps. Clamp the straight edge to the worktop and ensure the cutter enters from the front edge which will result in a perfectly straight, chip-free cut.

Our Worktop Specialists can advise on a comprehensive range of professional-quality worktop jigs, please contact us for more information

All cut edges must be sealed with a water-resistant material, such as silicone.

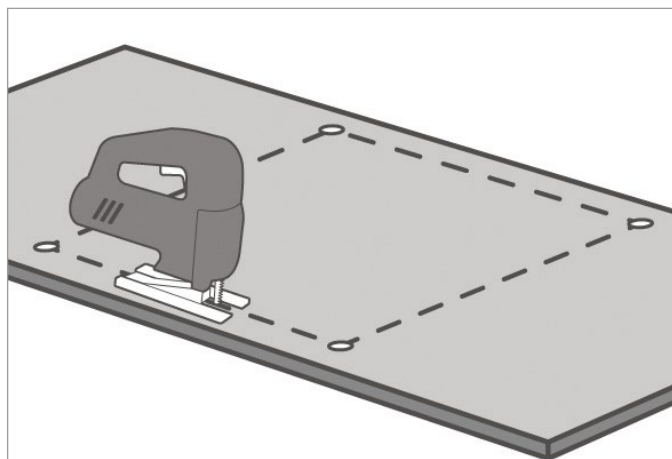
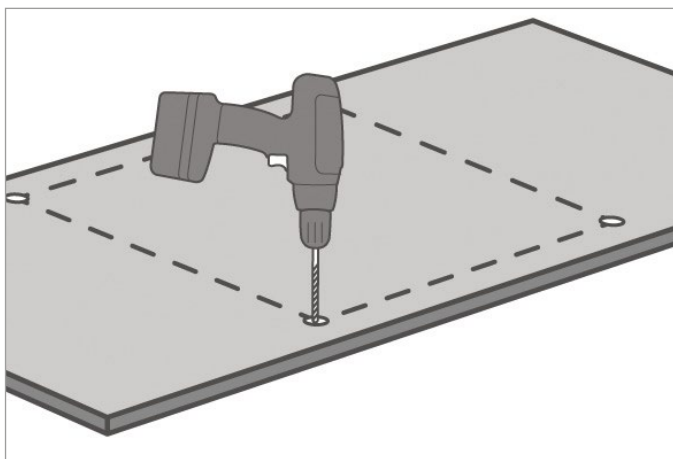
## CUT-OUTS FOR HOBS, SINKS ETC

When making a cut-out for a sink, hob or other inset worktop appliance, use the template supplied as a guide for cutting your Bonded FENIX NTM® worktop.

Any cut-outs should be carefully measured and marked in pencil. Working from the decorative surface, drill through all the corners using at least a 10mm diameter drill bit (sharp internal corners can lead to cracks forming in the Bonded FENIX NTM® worktop). Cut-outs can be made using a portable hand router, as explained above.

Alternatively, a jig saw can be used, providing that the four corners have been pre-drilled using a 10mm drill bit. Mark out the area to be cut on the decorative side of the worktop and drill a hole in each of the four corners of the cut-out. Once this has been done, turn the worktop over and mark a straight line from one hole to another. Use a jig saw with a fine-toothed blade to cut from hole to hole. Ensure the section to be cut out is well supported on the final cut.

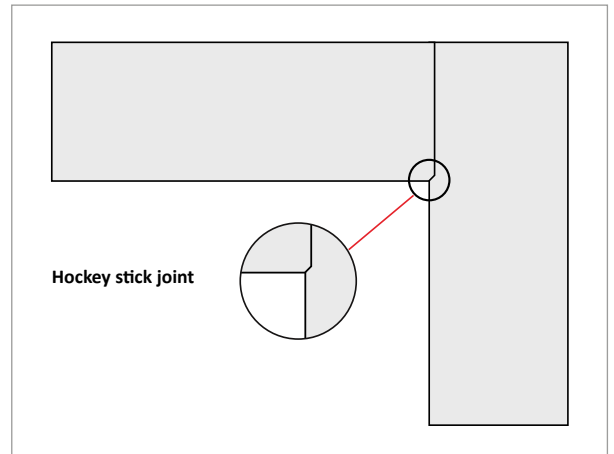
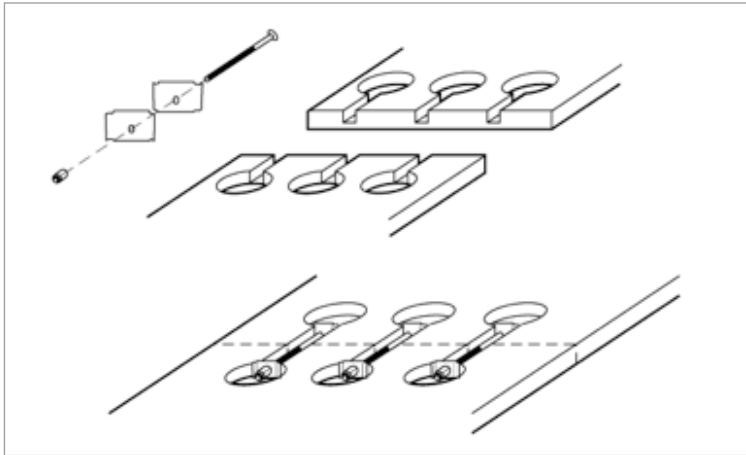
Make sure all exposed edges are sealed with a silicone sealant. If you have fitted an overmount sink to the worktop, seal around the sink with an appropriate mould-resistant silicone to prevent water ingress.



## JOINTING WORKTOPS

When joining two Bonded FENIX NTM® worktops together, we recommend using either a 90° standard joint or a 45° mitre joint depending on worktop layout. This style of mitre joint is also known as a hockey stick joint, as it features a curved cut that resembles the shape of a hockey stick. Bolt apertures should be cut on the underside of the worktop using a jig and should be no deeper than 25mm for 40mm worktop and no deeper than 20mm for 24mm thick worktop. For a 635mm deep worktop three bolts are recommended, and four bolts for 900mm deep worktop.

After the worktops have been cut and mitred to size, apply the appropriate colour matched Topseal to one side of the joint, making sure all raw chipboard has been completely covered. Close the joint quickly allowing the two sides to align and fully tighten the jointing bolts, making sure there is adhesive squeezing out along the entire length of the joint, including the front profile. This is an important step as the Topseal must also seal the two surfaces together. Remove any surplus sealant using a plastic spatula or similar- do not use anything metal as this will scratch the surface. Once this has been done, wipe off with a damp cloth. Care should be taken to ensure not to over wipe the joint and remove any of the Topseal from the joint. The worktops should then be left for 48 hours to allow the Topseal to achieve its full 100% bonding strength.



#### PLEASE NOTE

WE OFFER A 3 YEAR GUARANTEE AGAINST ANY MANUFACTURING DEFECTS PROVIDING THAT ALL INSTALLATION AND CARE INSTRUCTIONS ARE STRICTLY FOLLOWED SUBJECT TO NORMAL WEAR AND TEAR.

FAILURE TO FOLLOW THESE INSTALLATION INSTRUCTIONS WILL VOID ANY PRODUCT WARRANTY.

## LOOKING AFTER YOUR BONDED FENIX NTM® WORKTOPS

Following a few easy steps will help keep your Bonded FENIX NTM® worktops in the best possible condition. It is important to remember that:

- Bonded FENIX NTM® is very durable, however the surface of these worktops must never be treated with products containing abrasive substances, abrasive sponges or products such as sandpaper or steel wool.
- Products with high acidity or alkaline content should not directly touch the surface as they could stain your FENIX NTM® worktops and accessories.
- When using solvents, cloths must be perfectly clean to not leave marks on the surface.
- Avoid furniture polishes and wax based cleaners as they tend to form a sticky layer on the Bonded FENIX NTM® surface, to which dirt sticks to.

## MAINTAINING BONDED FENIX NTM® WORKTOPS

Bonded FENIX NTM® surfaces and accessories should be cleaned regularly but do not require special maintenance, just a damp cloth with warm water or mild detergents. Almost all normal household cleaning products or disinfectants are fine to use on the surfaces. We suggest using a sponge for regular cleaning and maintaining these worktops. All the items you need for maintaining your Bonded FENIX NTM worktop can be found in the UNIKA Super Matte Laminate Care kit.

For stubborn marks which cannot be cleaned with regular household detergents, please visit the Maintenance and Cleaning pages within the downloads section at [www.fenixforinteriors.com](http://www.fenixforinteriors.com)

## CLEANING AND MAINTENANCE AND ADVICE

### Type of dirt



Syrup, fruit juice, jam, spirits, milk, tea, coffee, wine, spirits, soap and ink.

### Recommended cleaning instructions

1



**1. REMOVE** any stain with a degreaser and coarse microfiber cloth.

2



**2. RINSE** thoroughly using a fine microfiber cloth and warm water.



Animal and vegetable fats, sauces, blood, eggs, smoke, gelatine, vegetable and vinyl based glues, organic waste, gum arabic.

1



**1. REMOVE** with kitchen roll.

2



**2. REMOVE** any stain with a degreaser and coarse microfiber cloth.

3



**3. RINSE** thoroughly using a fine microfiber cloth and warm water.



Hair spray, vegetable oil, biro and felt tip, pens, wax, foundations and greasy make-up, residual solvent marks, nail polish, spray lacquer, linseed oil, neoprene glues, traces of silicone, lime deposits.

1



**1. REMOVE** using kitchen roll soaked in nail polish remover (acetone).

2



**2. REMOVE** any stain with a degreaser and coarse microfiber cloth.

3



**3. RINSE** thoroughly using a fine microfiber cloth and warm water.



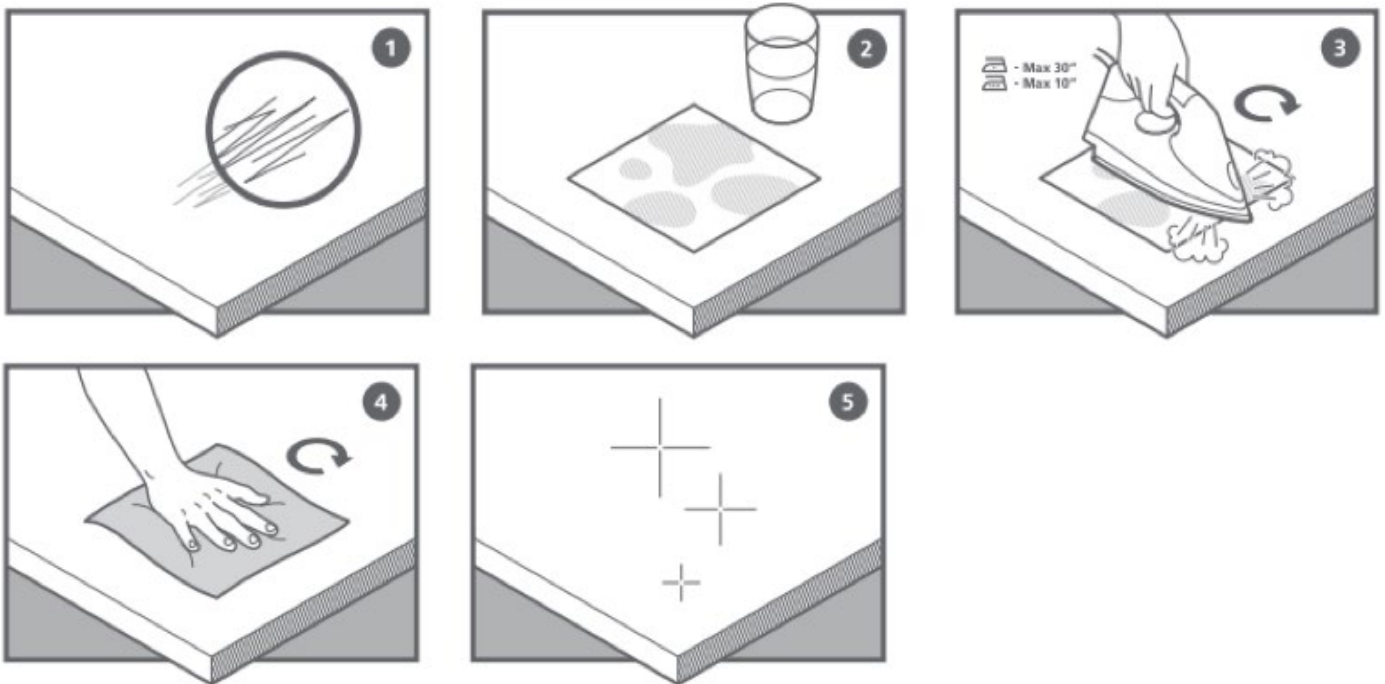
**PLEASE NOTE**

THESE GUIDELINES ARE FOR REPAIRING SUPERFICIAL MICRO-SCRATCHES TO THE TOP FACE OF THE SOLID FENIX NTM® WORKTOP AND ARE NOT APPLICABLE TO THE EDGING STRIPS.

If you notice a superficial micro-scratch on the surface of your Solid FENIX NTM® worktop, there are two ways to treat it:

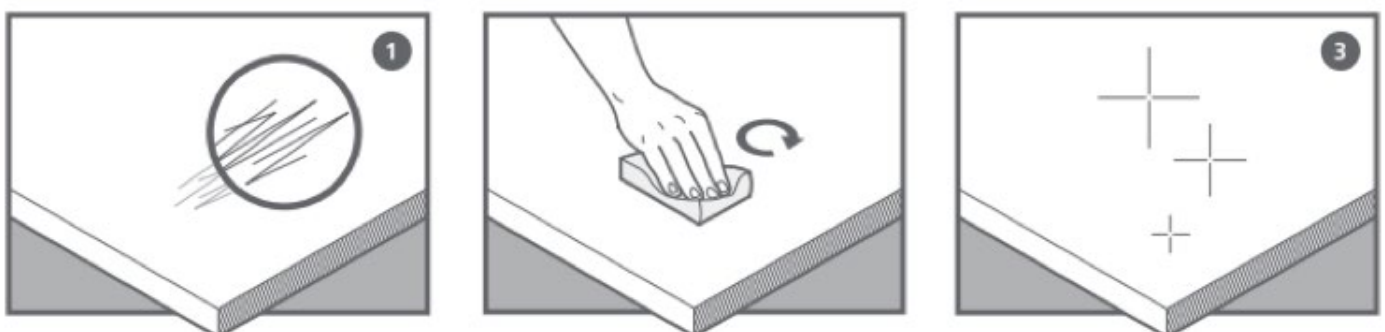
**MAINTENANCE USING AN IRON**

- 1/ Superficial defects caused by micro-scratches
- 2/ Place a damp sheet of kitchen roll over the area where the micro-scratch can be seen.
- 3/ Place the hot iron on the surface that needs repairing. Do not leave the iron on the surface for more than 10 seconds at a time.
- 4/ Rinse the repaired area with lukewarm water and a microfibre cloth.
- 5/ The surface should now be healed.



**MAINTENANCE USING A MAGIC SPONGE**

- 1/ Superficial defects caused by micro-scratches
- 2/ Rub the magic sponge on the area where the superficial micro-scratch can be seen. The sponge can be used dry or slightly damp.
- 3/ The surface should be healed.



## **DISCLAIMER**

This document gives general recommendations. This document serves as a general guide to good practice and constitutes no form of warranty or representation as to fitness for purpose in respect of the products and processes described in it. Any information or products contained within this document must be verified and tested for suitability by the user for his or her particular purpose or specific application. Consideration needs to be given to local or specific circumstances. The content of this document reflects our knowledge and experience at the time of publication. The information provided in this document is solely indicative. We are unable to warrant the accuracy and completeness of this information. No rights can be derived from the information provided; the use of the information is at your risk and responsibility. This document does not guarantee any properties of our products. We do not warrant that the information in this document is suitable for the purpose for which you consult it. The document does not contain any design, structural calculation, estimate or other warranty or representation that may be relied on. Colours used in our communications (including but not limited to printed matter) and in samples of our products may differ from the colours of the products to be supplied. Our products and samples are produced within the specified colour tolerances and the colours (of production batches) may differ, even if the same colour is used. The viewing angle also influences the colour perception. Customers and third parties must have a professional adviser inform them about (the suitability of) our products for all desired applications and about applicable laws and regulations. We reserve the right to change (the specifications for) our products without prior notice. The newest version of the document replaces all previous versions. We advise that the newest version may contain technical changes that must be taken into account when using the products. The latest version of the document may be consulted on our website. You should always check whether an updated version of the document is available. Any warranty on the products may be voided if the (contents of the) latest version of this document, which may be updated from time to time, is not (properly) followed. We have made every effort to ensure the accuracy of the information in this document, but we cannot be held liable for any oversights, inaccuracies or typographical errors. To the maximum extent permitted under the applicable law, we shall not be liable (neither contractual nor non-contractual) for any damage arising from or related to the use of this document, except if and to the extent that such damage is the result of wilful misconduct or gross negligence on our part. All our oral and written statements, offers, quotations, sales, supplies, deliveries and/or agreements and all related activities are governed by our general terms and conditions. All intellectual property rights and other rights regarding the content of this document (including logos, text and photographs) are owned by us and/or our licensors.